

TERTIANUM

Wohn- und Pflegezentrum Letzipark, Zürich

1½-Zimmer-Appartement

Typ 1.5 A

Wohnfläche

36.3 m²

Loggia

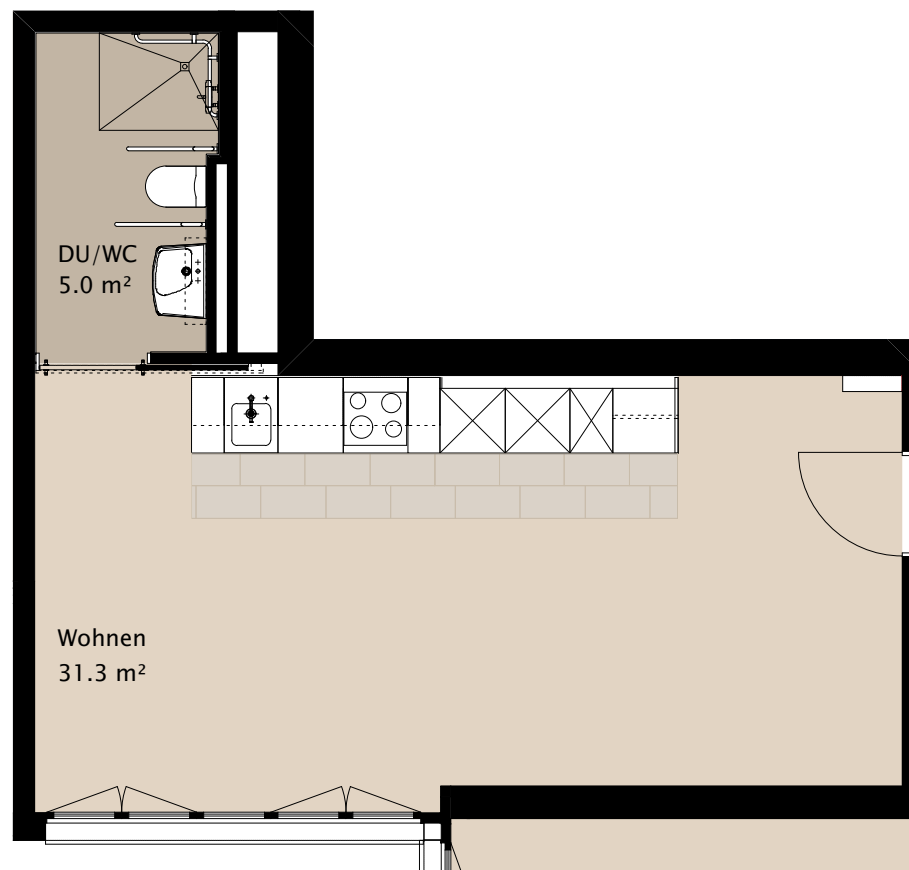
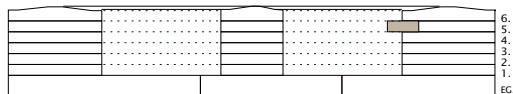
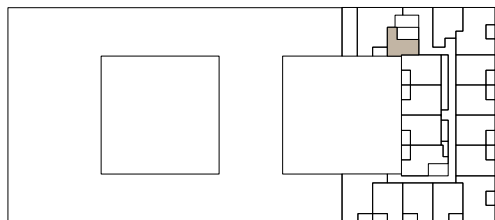
/

Gesamtfläche

36.3 m²

Appartement Nr.

5.2



TERTIANUM

Wohn- und Pflegezentrum Letzipark, Zürich

1½-Zimmer-Appartement

Typ 1.5 B

Wohnfläche

44.7 m²

Terrasse

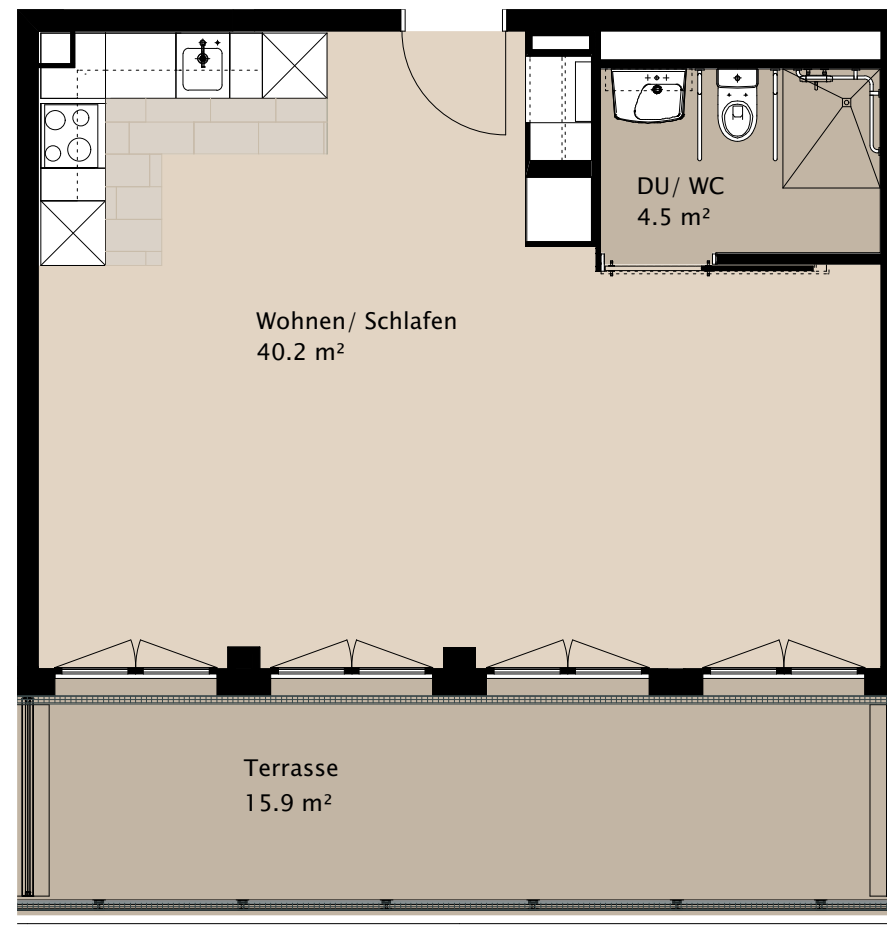
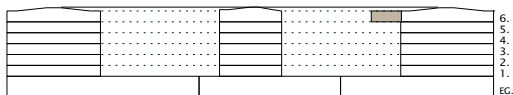
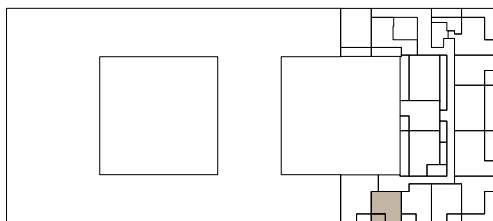
15.9 m²

Gesamtfläche

60.6 m²

Appartement Nr.

6.7



TERTIANUM

Wohn- und Pflegezentrum Letzipark, Zürich

2½-Zimmer-Appartement

Typ 2.5 A gespiegelt

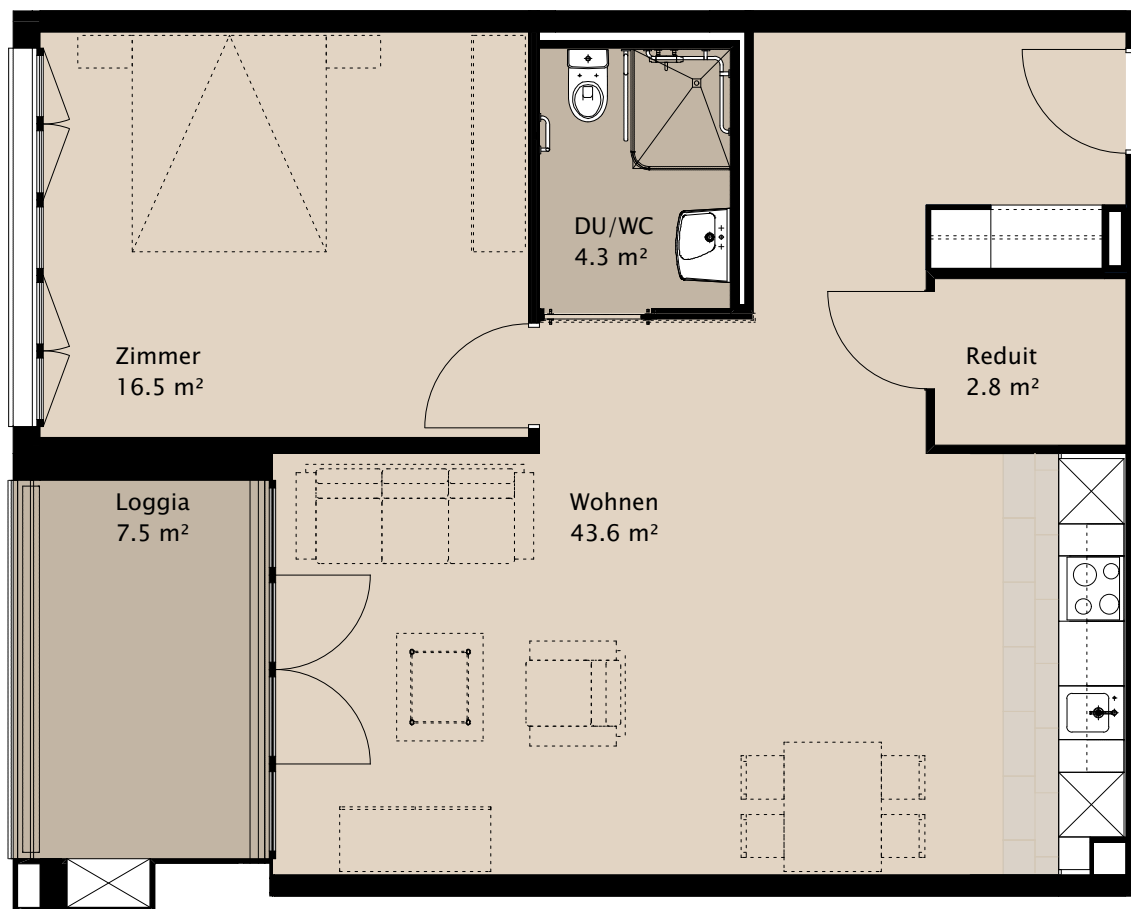
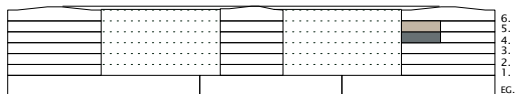
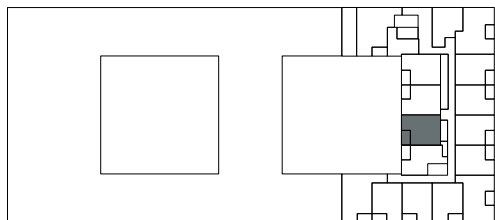
Wohnfläche 67.2 m²

Loggia 7.6 m²

Gesamtfläche 74.8 m²

Appartement Nr. 4.4

Appartement Nr. 5.5



TERTIANUM

Wohn- und Pflegezentrum Letzipark, Zürich

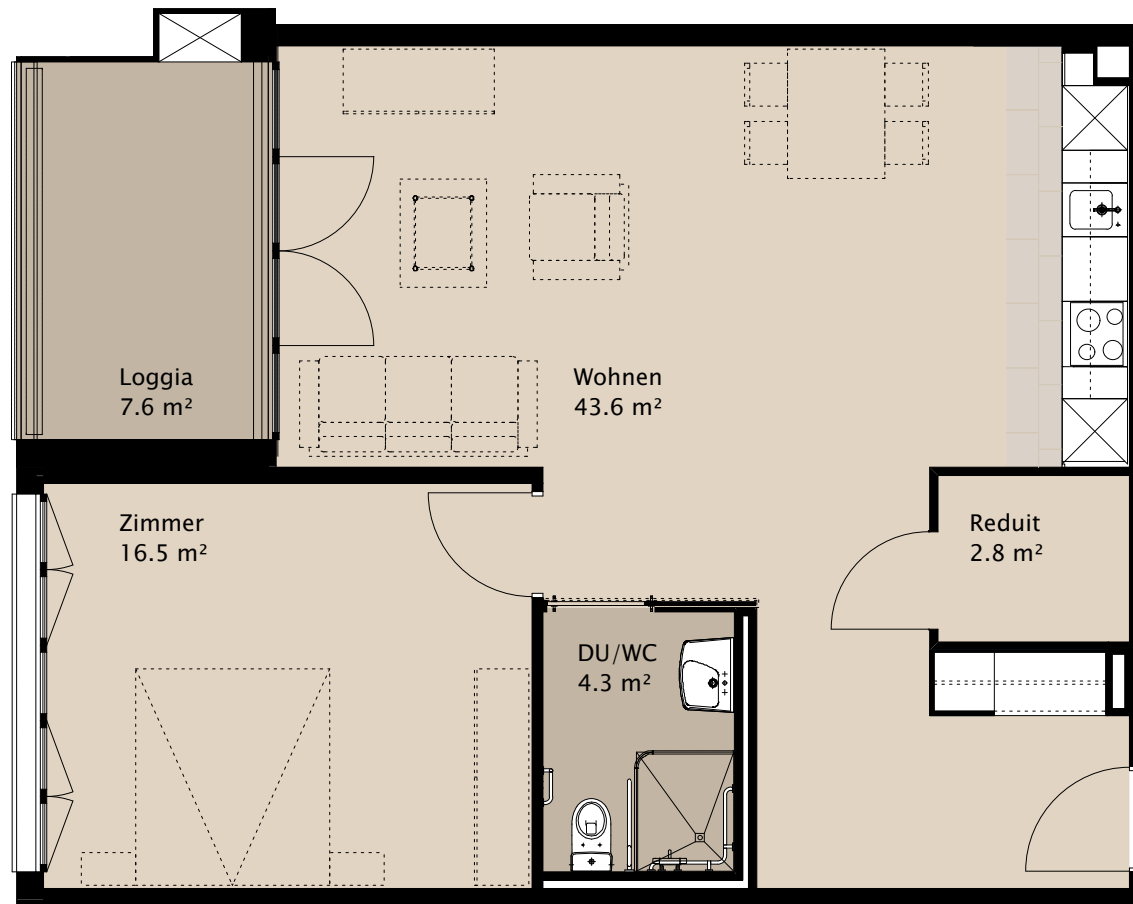
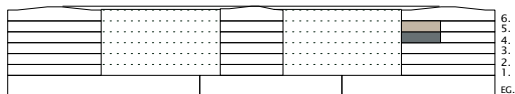
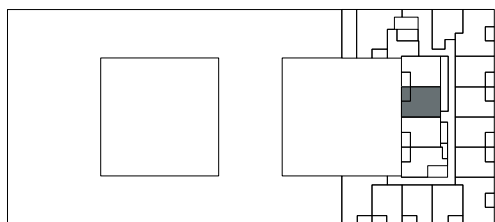
2½-Zimmer-Appartement

Typ 2.5 B gespiegelt

Wohnfläche 67.2 m²
Loggia 7.6 m²

Gesamtfläche 75.0 m²

Appartement Nr. 4.3
Appartement Nr. 5.4



TERTIANUM

Wohn- und Pflegezentrum Letzipark, Zürich

2½-Zimmer-Appartement

Typ 2.5 B

Wohnfläche 66.9–67.4 m²

Loggia 7.6 m²

Gesamtfläche 74.9–75.0 m²

Appartement Nr. 4.09

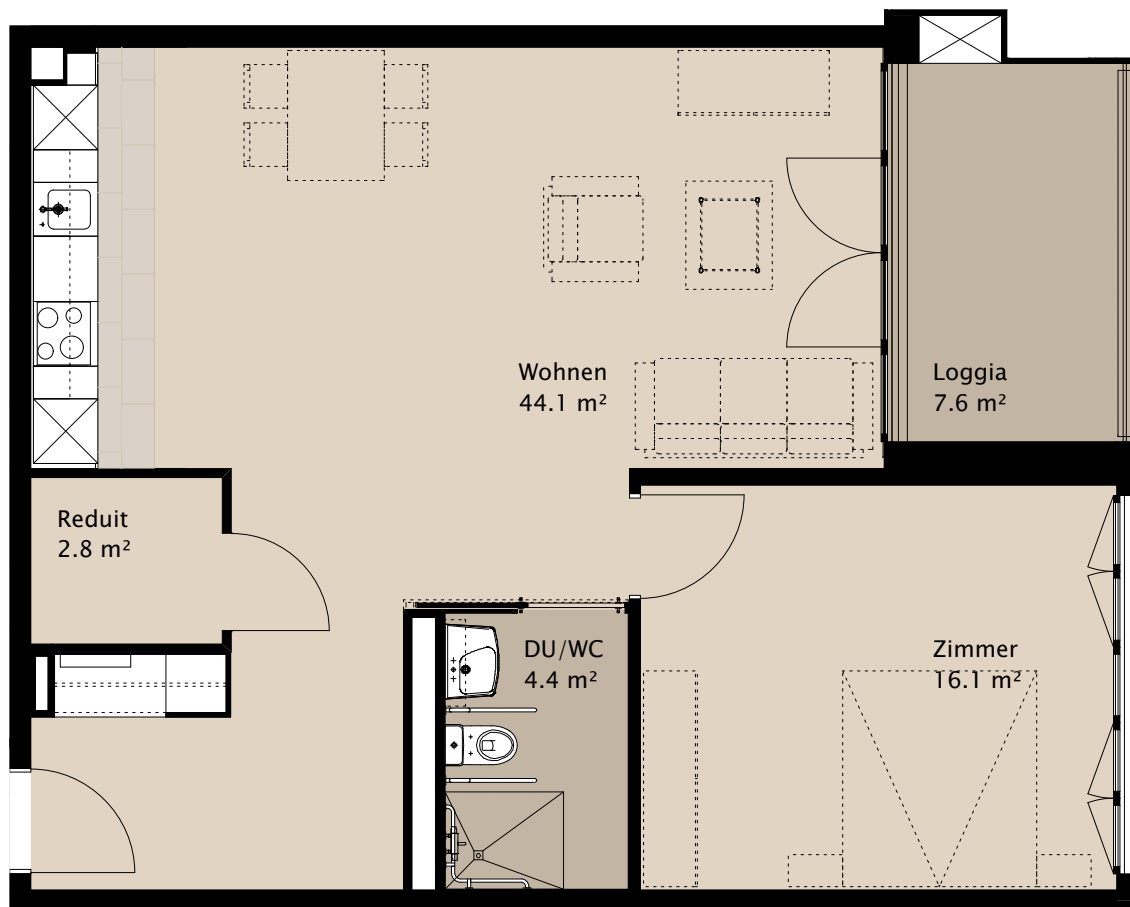
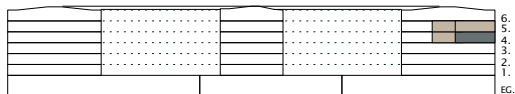
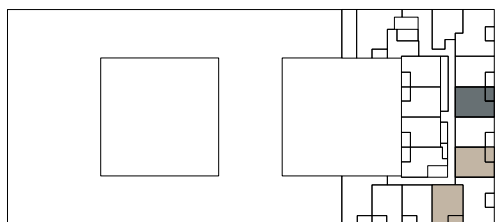
Appartement Nr. 4.11

Appartement Nr. 4.13

Appartement Nr. 5.10

Appartement Nr. 5.12

Appartement Nr. 5.14



TERTIANUM

Wohn- und Pflegezentrum Letzipark, Zürich

2½-Zimmer-Appartement

Typ 2.5 C

Wohnfläche

49.9 m²

Loggia

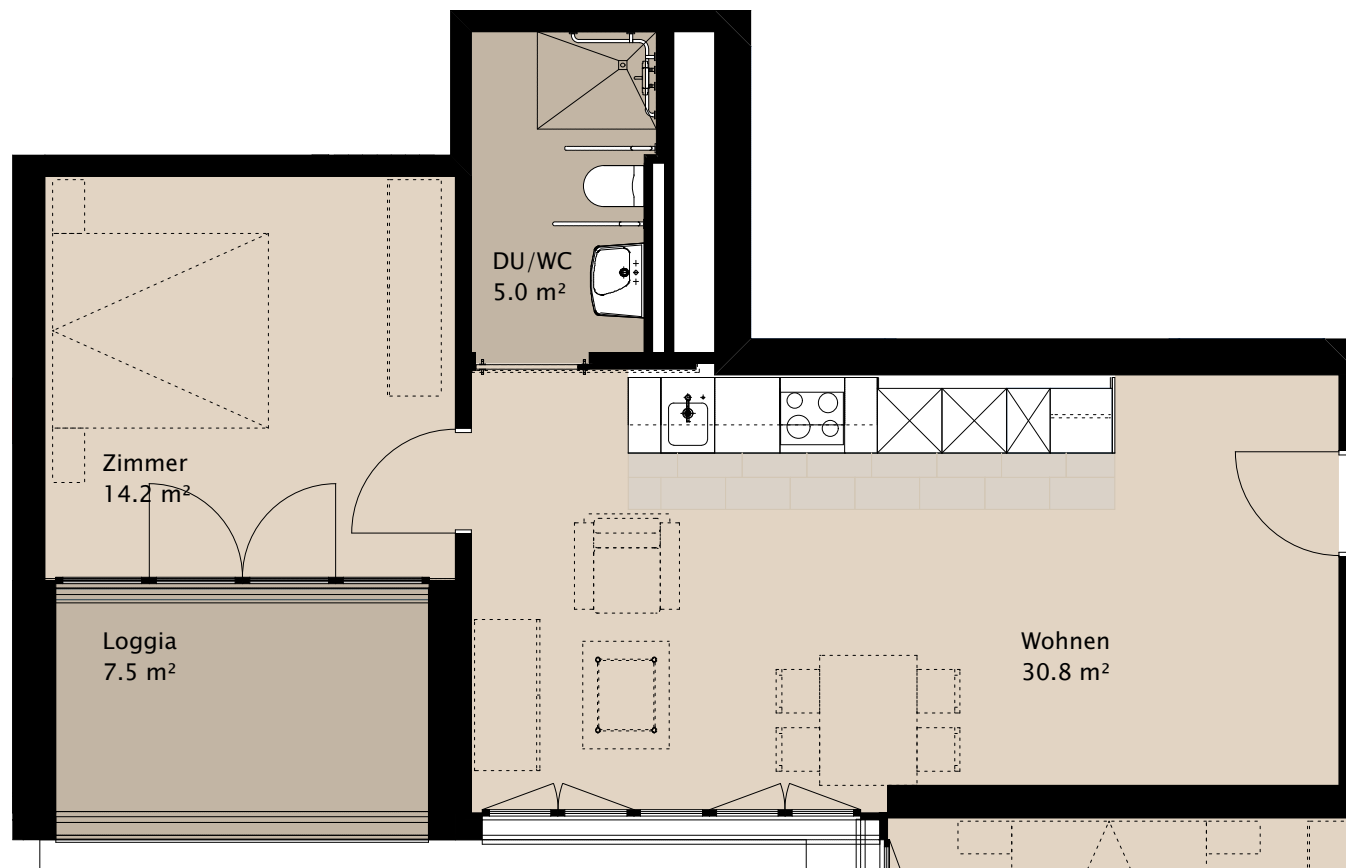
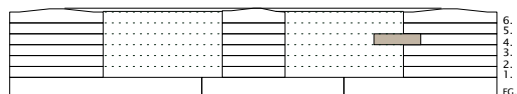
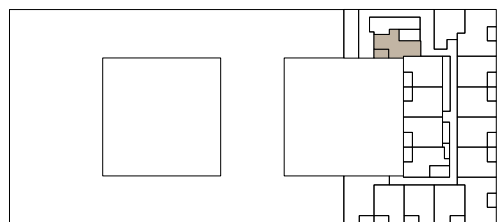
7.5 m²

Gesamtfläche

57.4 m²

Appartement Nr.

4.1



TERTIANUM

Wohn- und Pflegezentrum Letzipark, Zürich

2½-Zimmer-Appartement

Typ 2.5 D

Wohnfläche

60.6 m²

Loggia

7.6 m²

Gesamtfläche

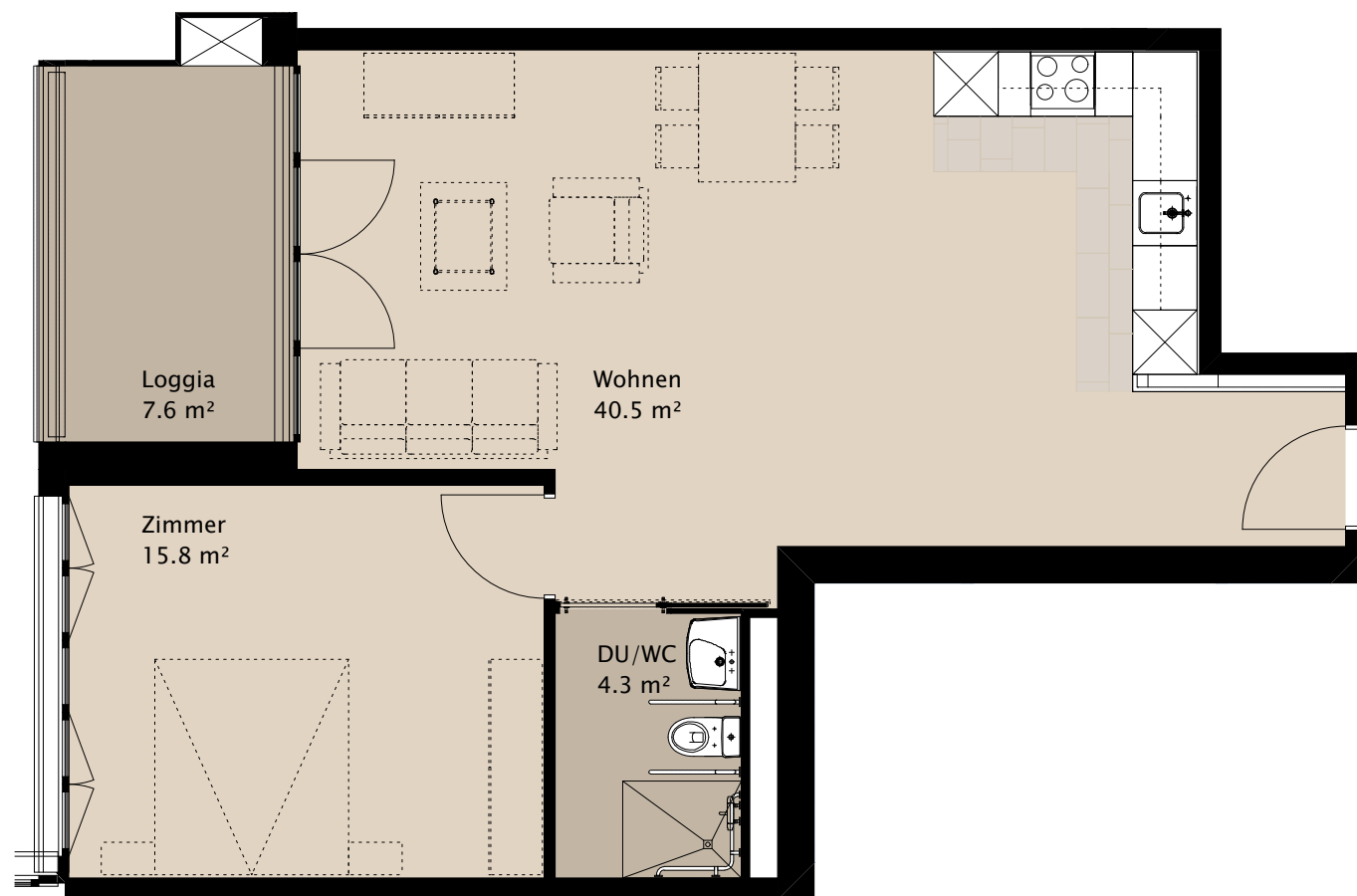
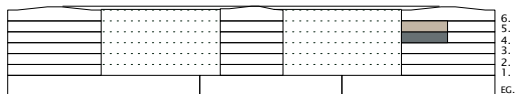
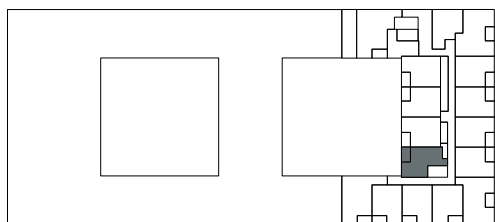
68.2 m²

Appartement Nr.

4.5

Appartement Nr.

5.6



TERTIANUM

Wohn- und Pflegezentrum Letzipark, Zürich

2½-Zimmer-Appartement

Typ 2.5 E

Wohnfläche

95.4 m²

Loggia

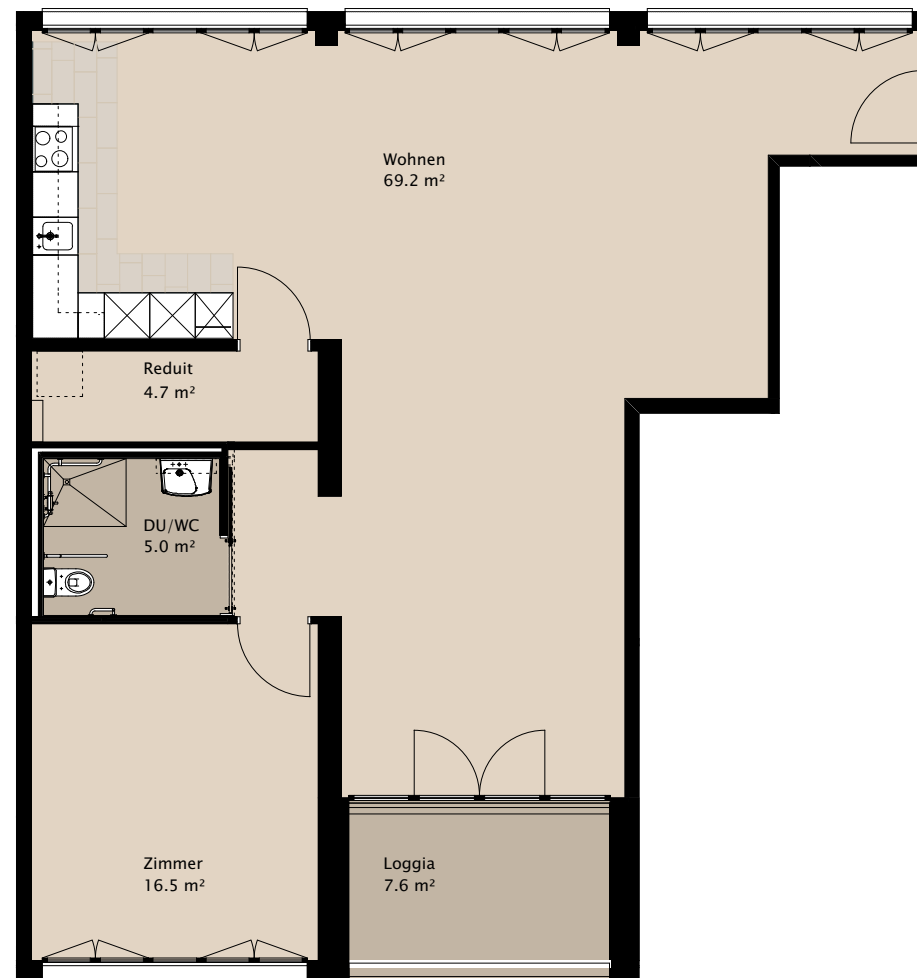
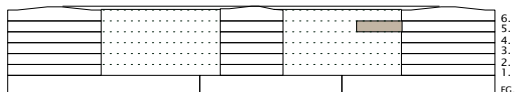
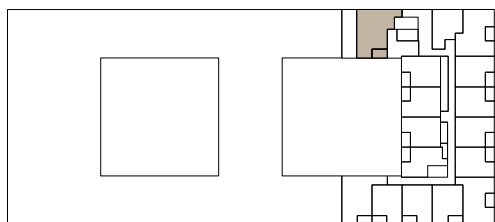
7.6 m²

Gesamtfläche

103.0 m²

Appartement Nr.

5.1



0 2m

TERTIANUM

Wohn- und Pflegezentrum Letzipark, Zürich

2½-Zimmer-Appartement

Typ 2.5 F

Wohnfläche

63.5 m²

Terrasse

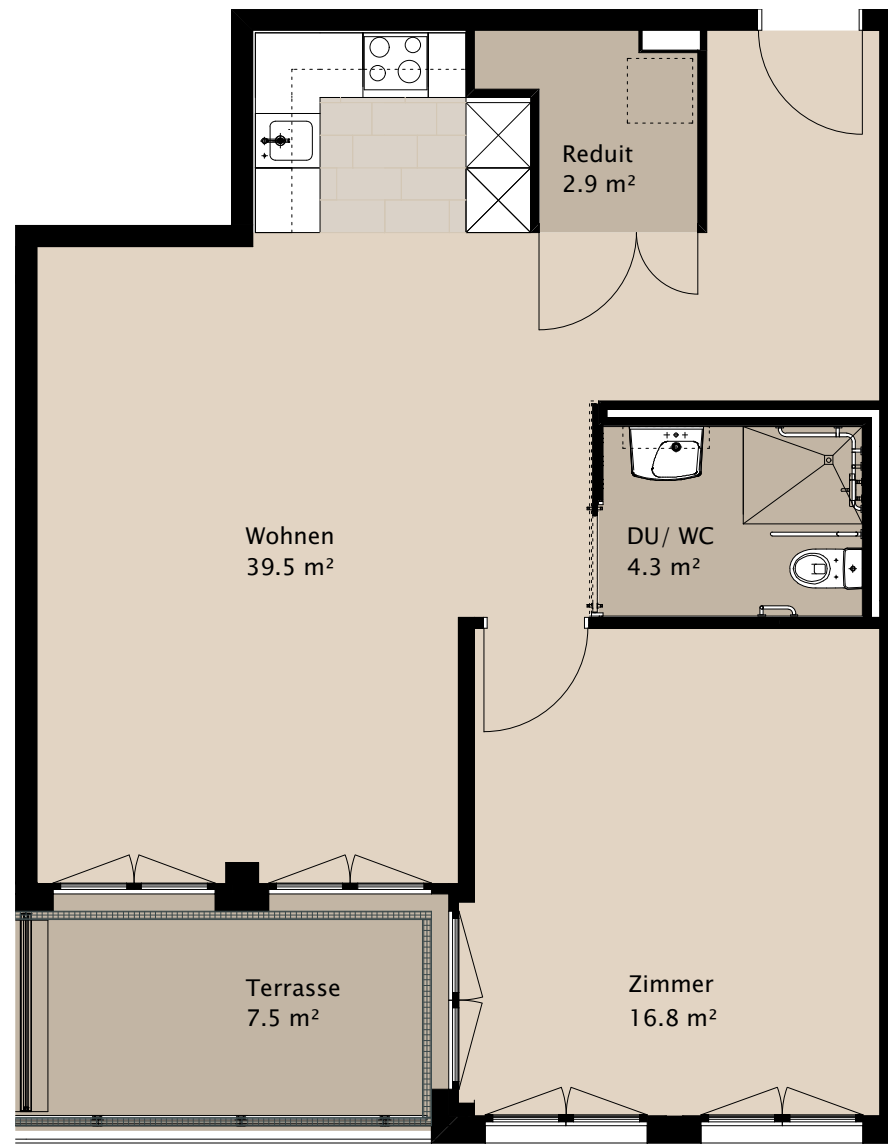
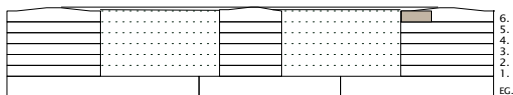
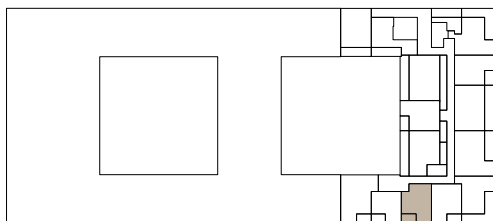
7.5 m²

Gesamtfläche

71.0 m²

Appartement Nr.

6.8



0 2m

TERTIANUM

Wohn- und Pflegezentrum Letzipark, Zürich

2½-Zimmer-Appartement

Typ 2.5 G

Wohnfläche

67.2 m²

Terrasse

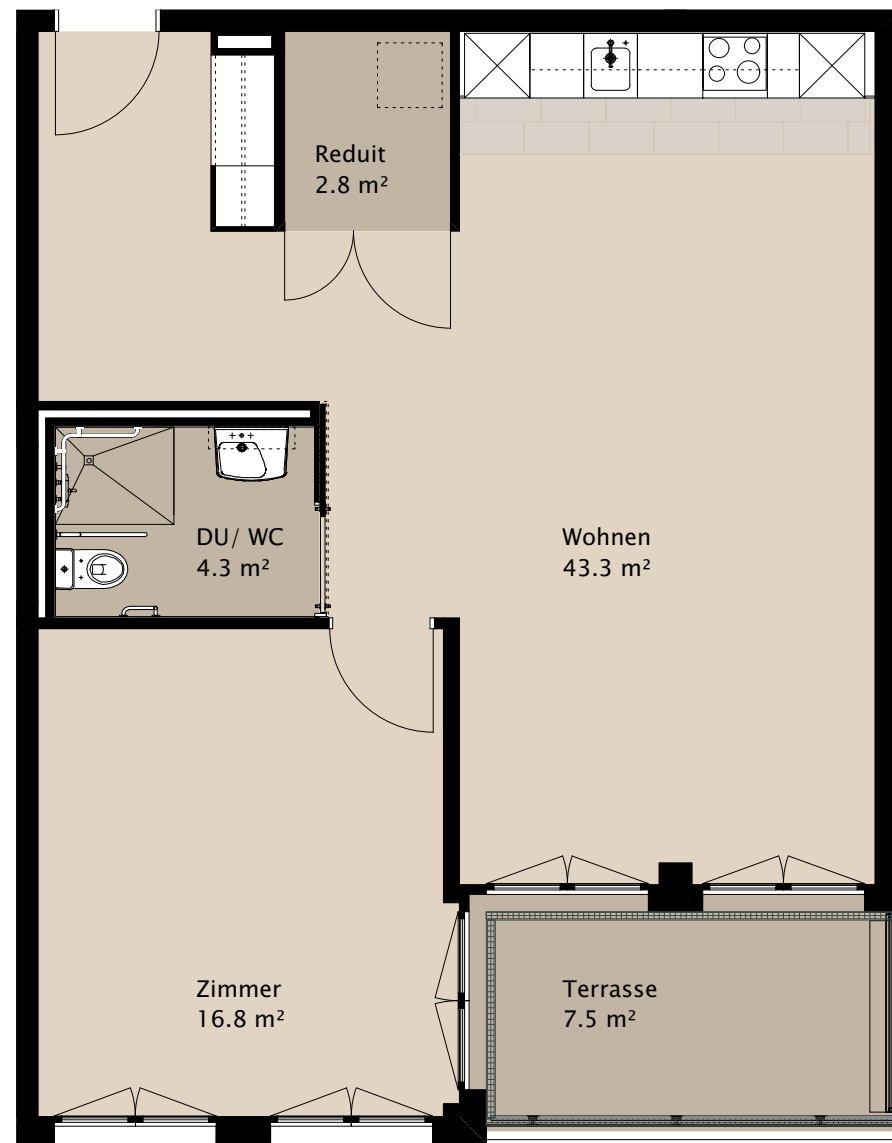
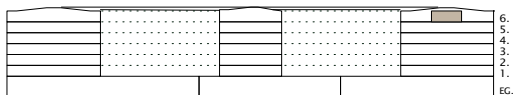
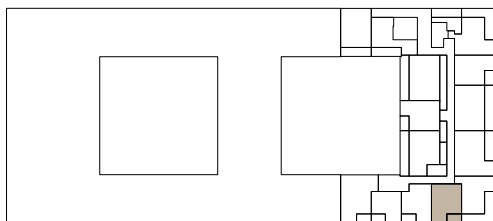
7.5 m²

Gesamtfläche

74.7 m²

Appartement Nr.

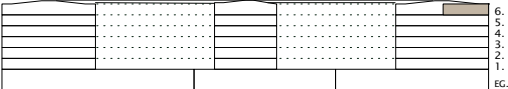
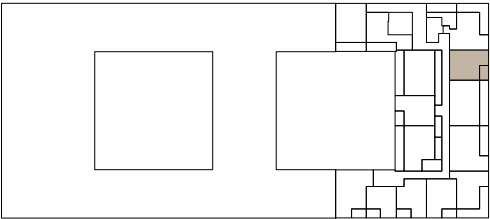
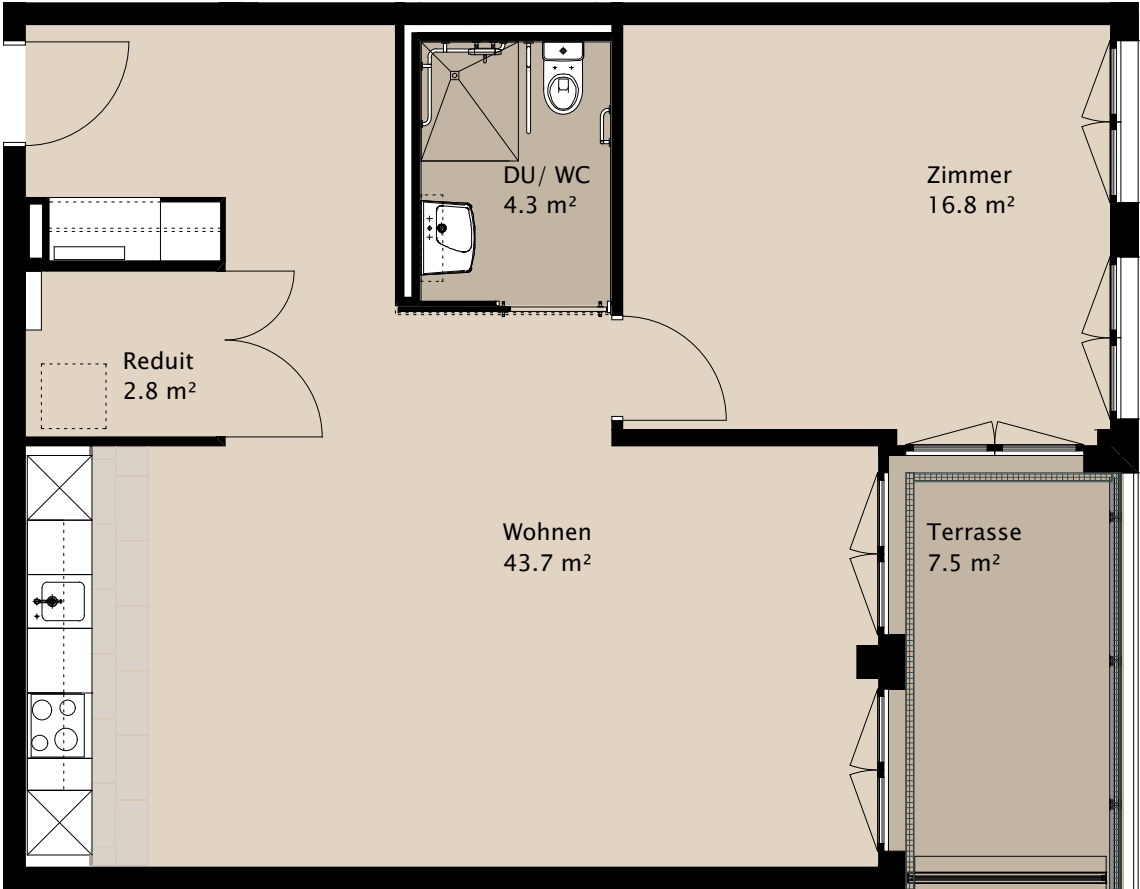
6.9



TERTIANUM

Wohn- und Pflegezentrum Letzipark, Zürich

2½-Zimmer-Appartement
 Typ 2.5 H
 Wohnfläche 67.6 m²
 Terrasse 7.5 m²
 Gesamtfläche 75.1 m²
 Appartement Nr. 6.13



TERTIANUM

Wohn- und Pflegezentrum Letzipark, Zürich

2½-Zimmer-Appartement

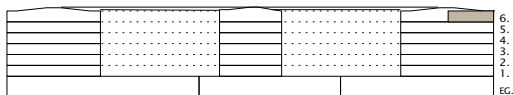
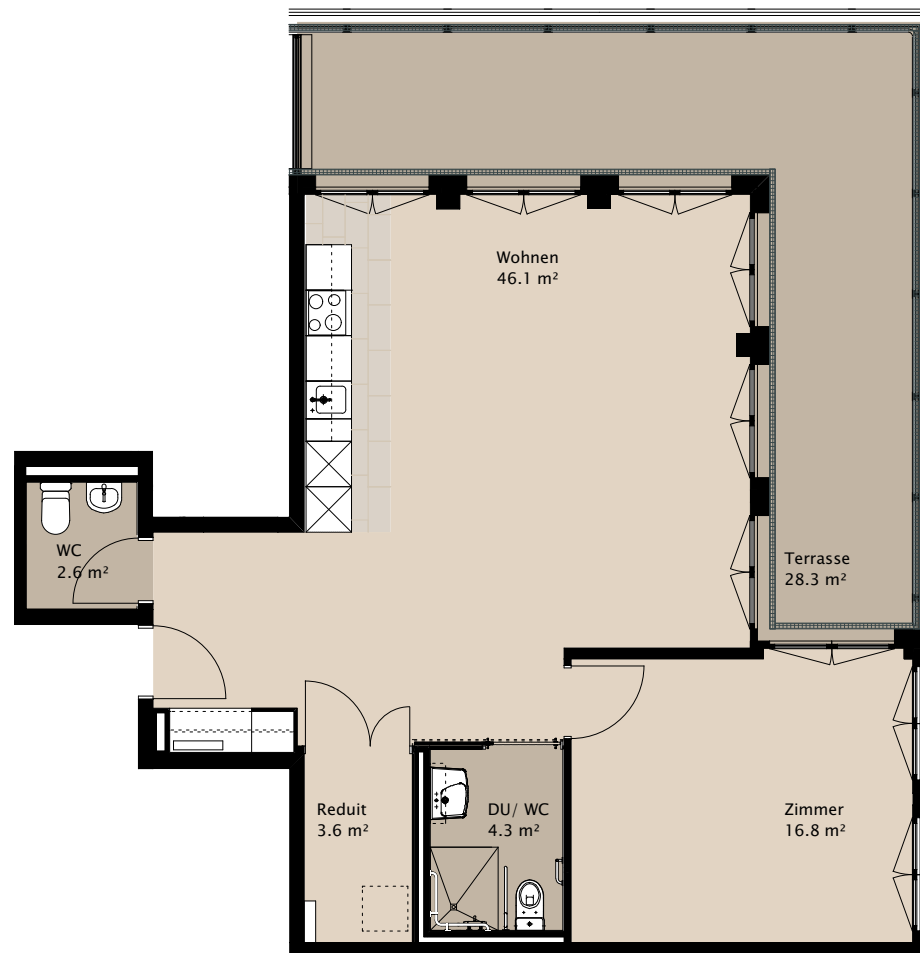
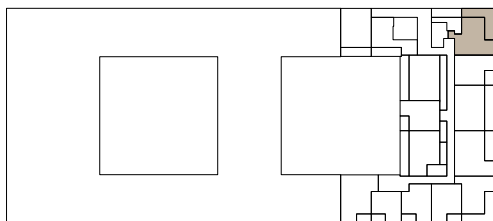
Typ 2.5 I

Wohnfläche 73.4 m²

Terrasse 28.3 m²

Gesamtfläche 101.7 m²

Appartement Nr. 6.14



TERTIANUM

Wohn- und Pflegezentrum Letzipark, Zürich

2½-Zimmer-Appartement

Typ 2.5 J

Wohnfläche

62.4 m²

Terrasse

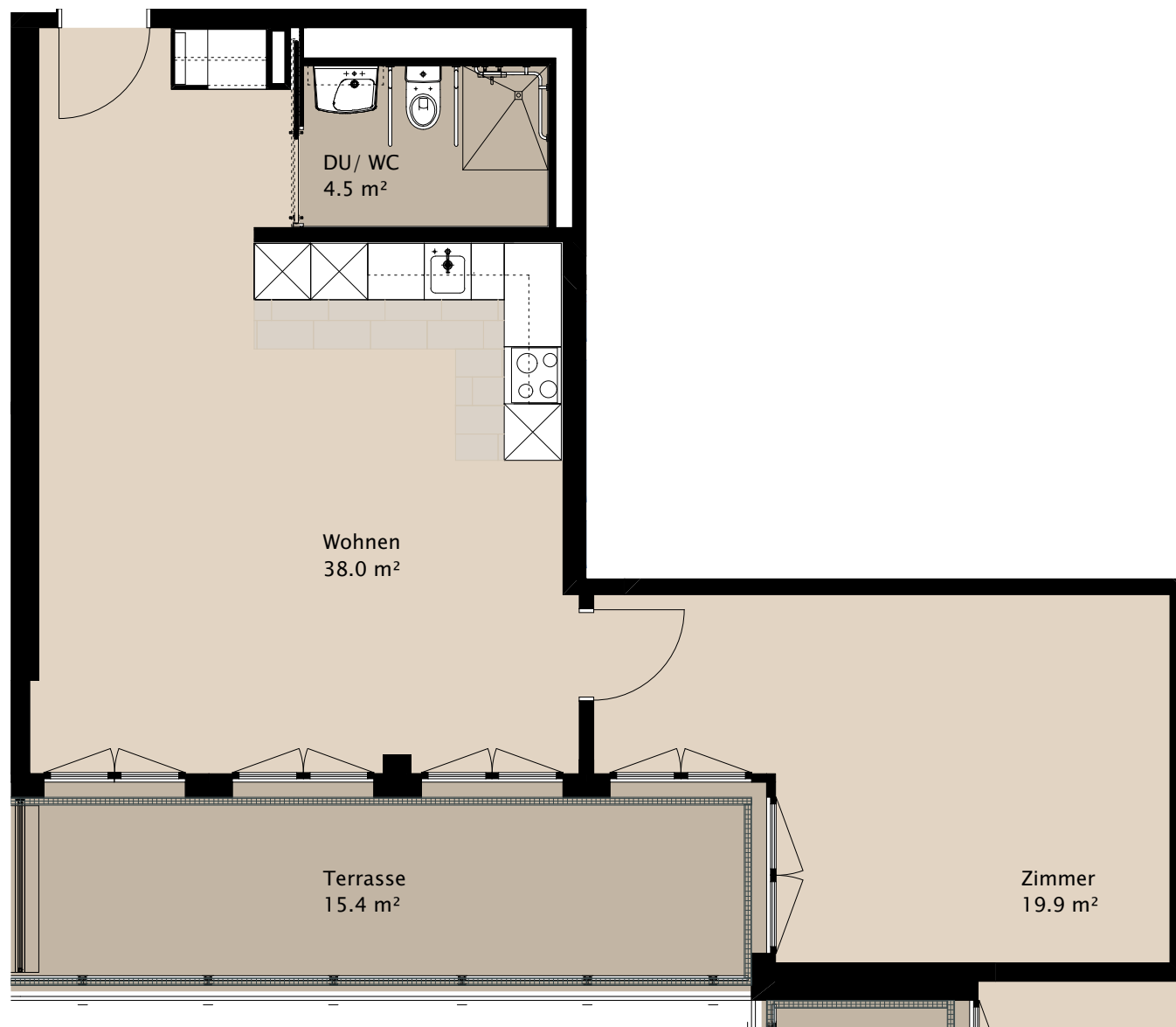
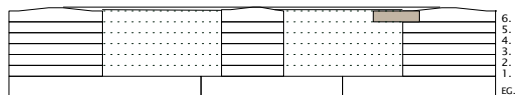
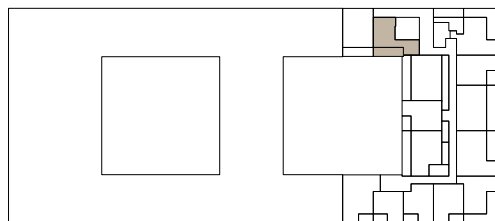
15.4 m²

Gesamtfläche

77.8 m²

Appartement Nr.

6.2



0 2m

TERTIANUM

Wohn- und Pflegezentrum Letzipark, Zürich

2½-Zimmer-Appartement

Typ 2.5 K

Wohnfläche

75.5 m²

Terrasse

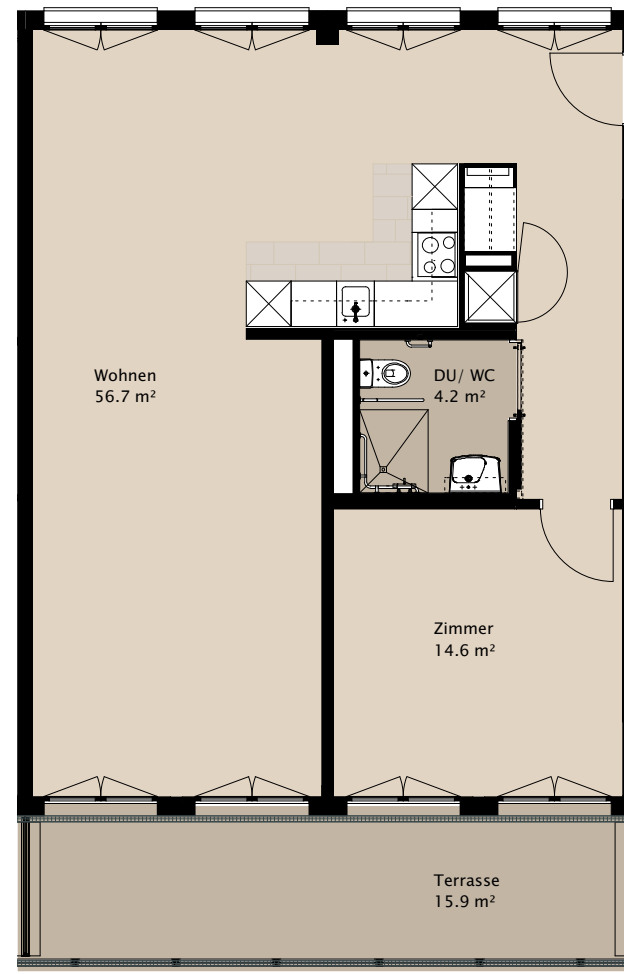
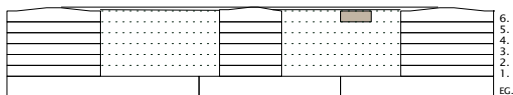
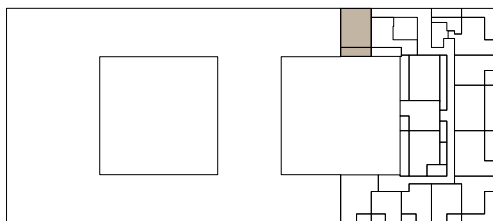
15.9 m²

Gesamtfläche

91.4 m²

Appartement Nr.

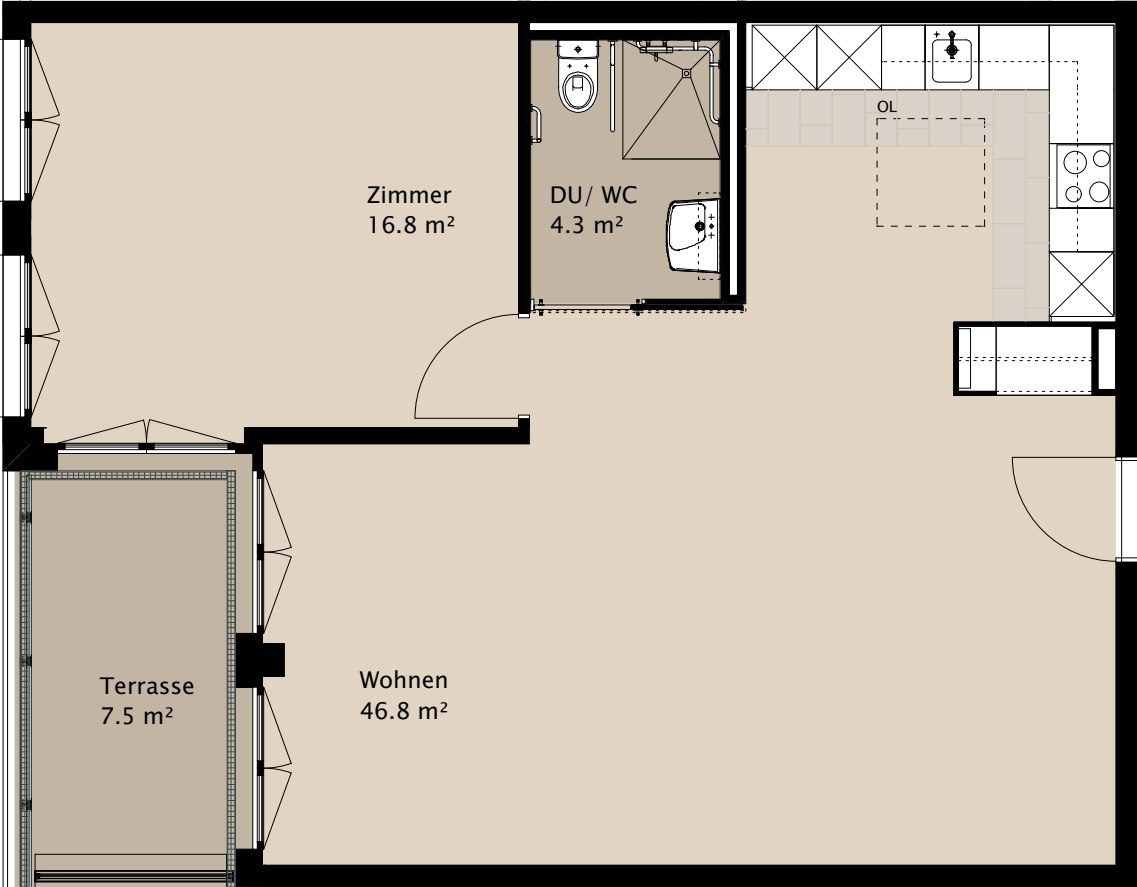
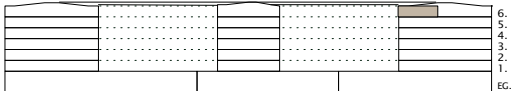
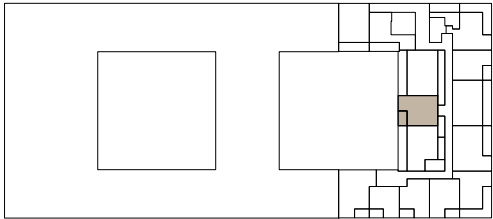
6.1



TERTIANUM

Wohn- und Pflegezentrum Letzipark, Zürich

2½-Zimmer-Appartement
Typ 2.5 L
Wohnfläche 67.9 m²
Terrasse 7.5 m²
Gesamtfläche 75.4 m²
Appartement Nr. 6.4



TERTIANUM

Wohn- und Pflegezentrum Letzipark, Zürich

2½-Zimmer-Appartement

Typ 2.5 M

Wohnfläche

79.6 m²

Terrasse

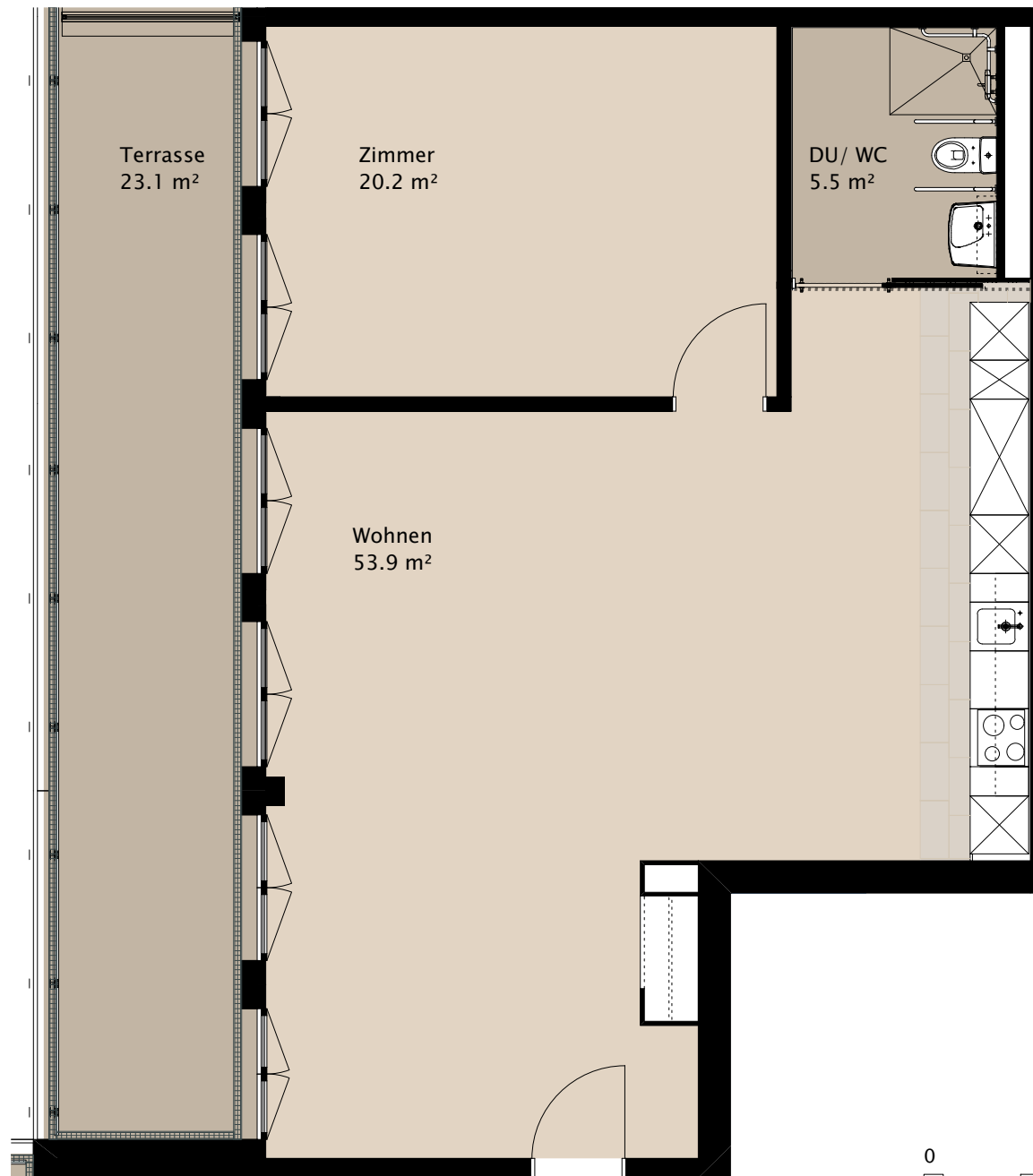
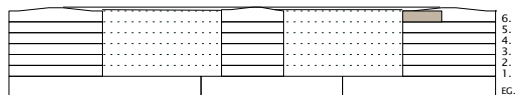
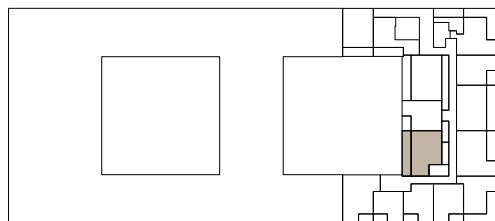
23.1 m²

Gesamtfläche

102.7 m²

Appartement Nr.

6.5



TERTIANUM

Wohn- und Pflegezentrum Letzipark, Zürich

2½-Zimmer-Appartement

Typ 2.5 O

Wohnfläche

66.0 m²

Loggia

7.6 m²

Gesamtfläche

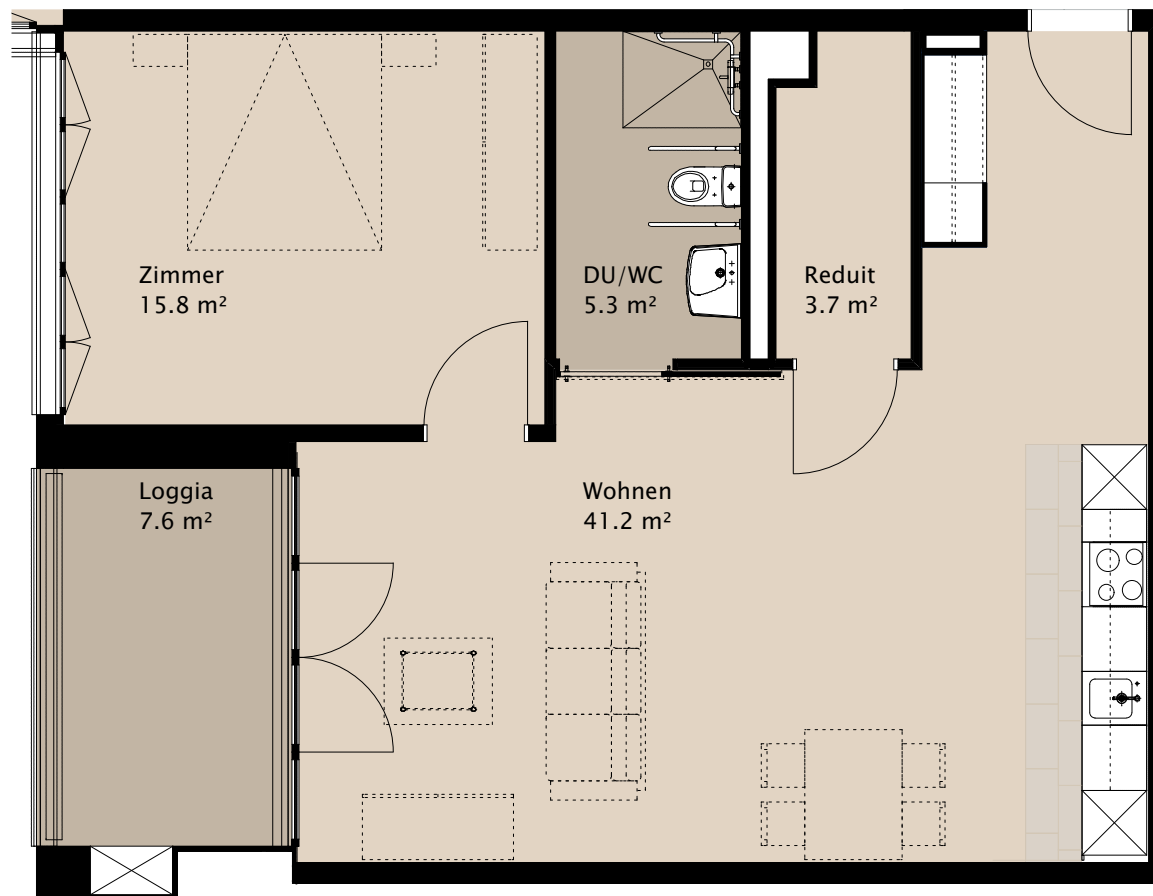
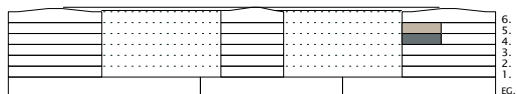
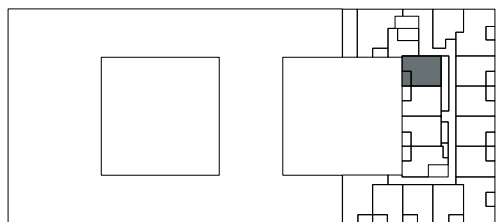
73.6 m²

Appartement Nr.

4.2

Appartement Nr.

5.3



0 2m

TERTIANUM

Wohn- und Pflegezentrum Letzipark, Zürich

2½-Zimmer-Appartement

Typ 2.5 A

Wohnfläche 67.1-67.4 m²

Loggia 7.6 m²

Gesamtfläche 74.7- 75.0 m²

Appartement Nr. 4.7

Appartement Nr. 4.8

Appartement Nr. 4.12

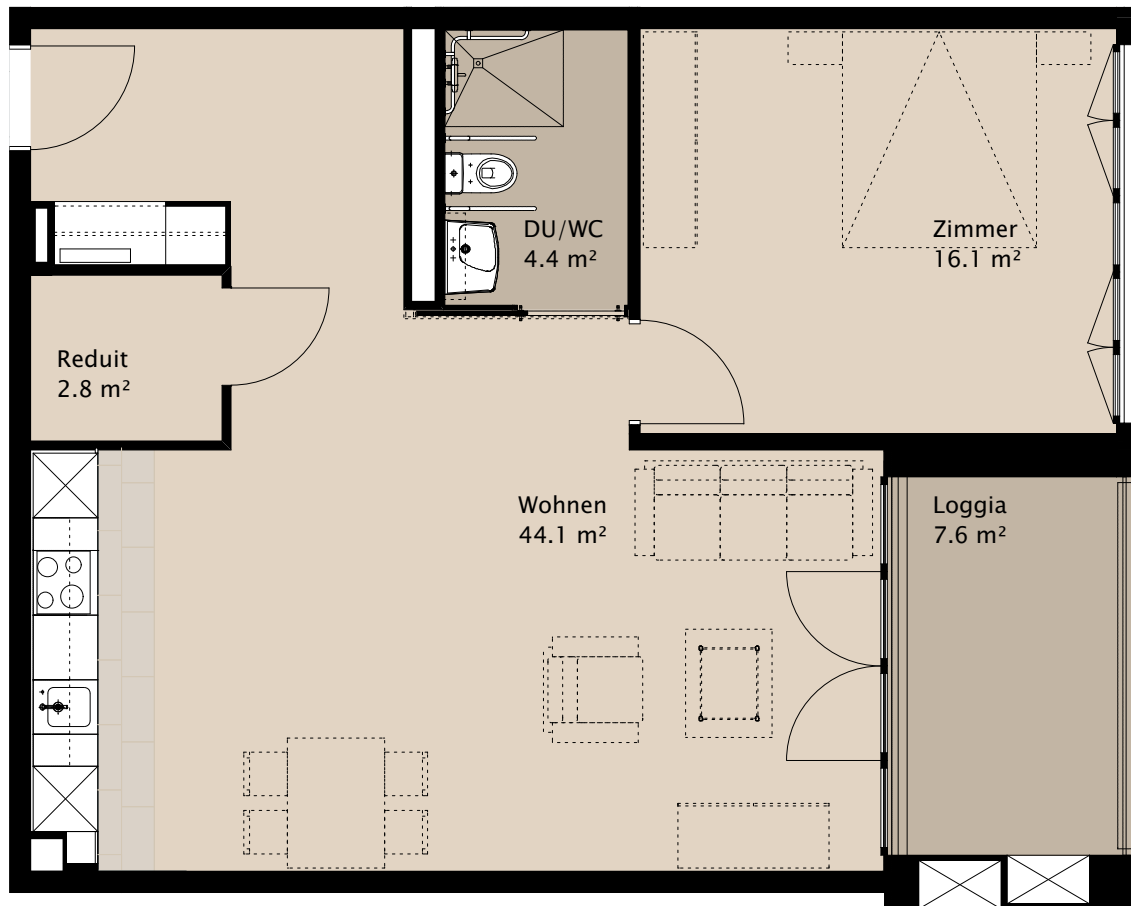
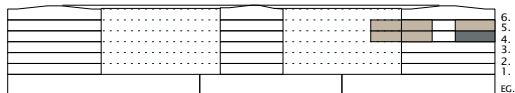
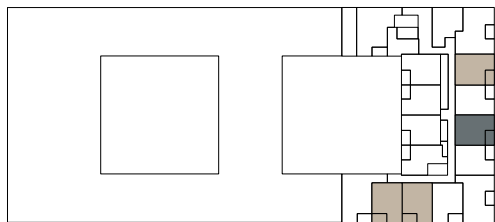
Appartement Nr. 4.14

Appartement Nr. 5.8

Appartement Nr. 5.9

Appartement Nr. 5.13

Appartement Nr. 5.15



TERTIANUM

Wohn- und Pflegezentrum Letzipark, Zürich

3½-Zimmer-Appartement

Typ 3.5 A

Wohnfläche

90.2 m²

Loggia

7.6 m²

Gesamtfläche

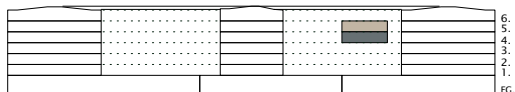
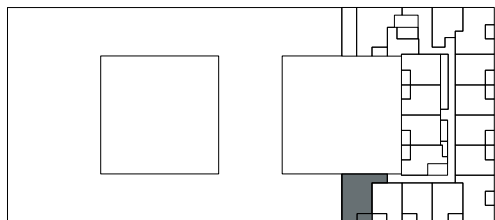
97.8 m²

Appartement Nr.

4.6

Appartement Nr.

5.7



0 2m

TERTIANUM

Wohn- und Pflegezentrum Letzipark, Zürich

3½-Zimmer-Appartement

Typ 3.5 B

Wohnfläche

86.6 m²

Loggia

7.6 m²

Gesamtfläche

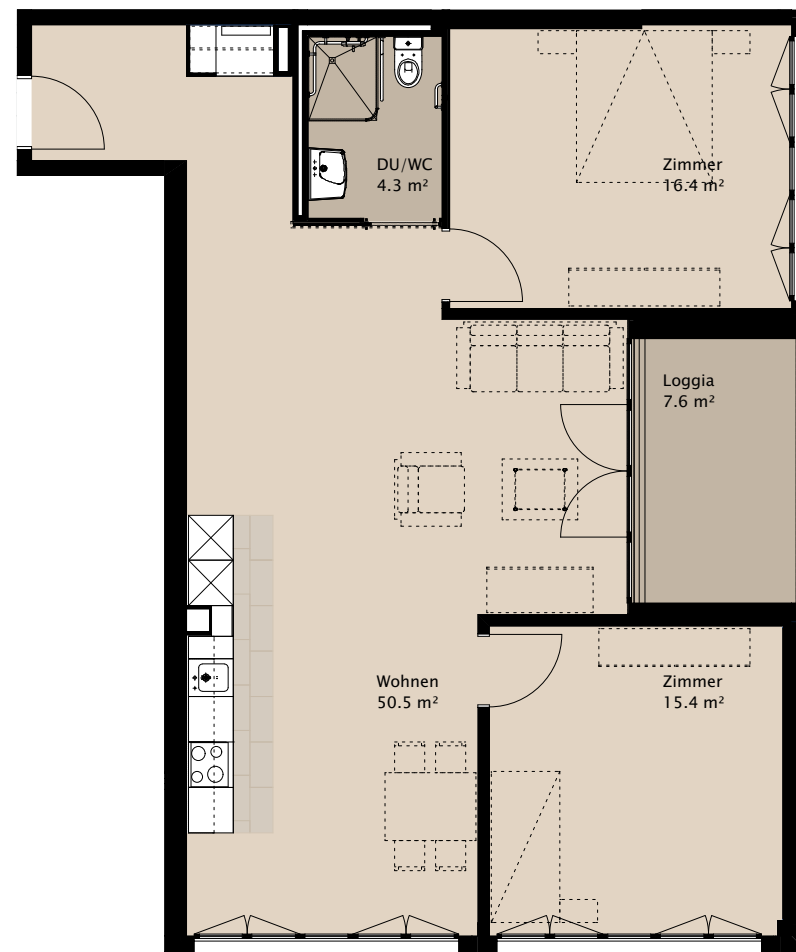
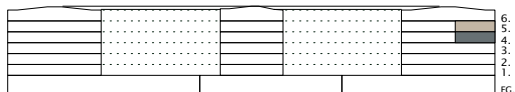
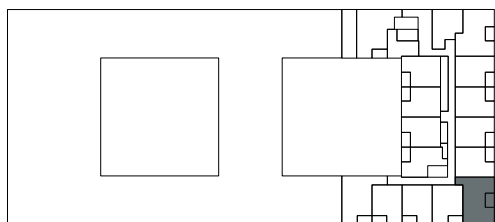
94.2 m²

Appartement Nr.

4.10

Appartement Nr.

5.11



TERTIANUM

Wohn- und Pflegezentrum Letzipark, Zürich

3½-Zimmer-Appartement

Typ 3.5 C

Wohnfläche

94.6 m²

Loggia

7.6 m²

Gesamtfläche

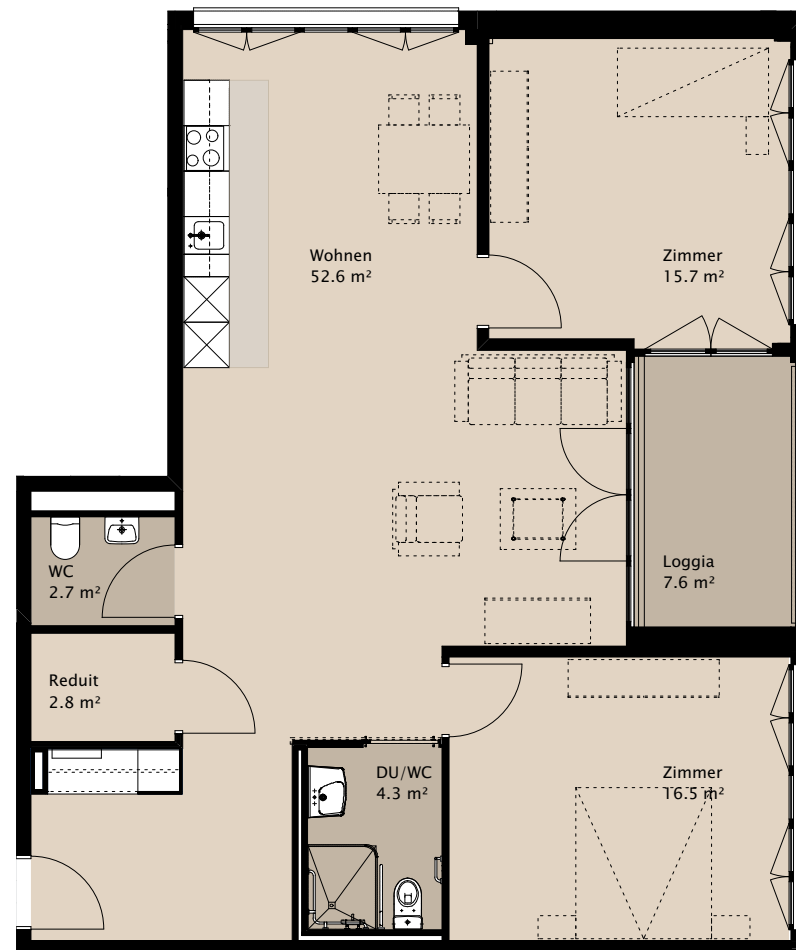
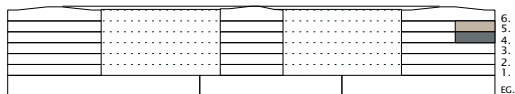
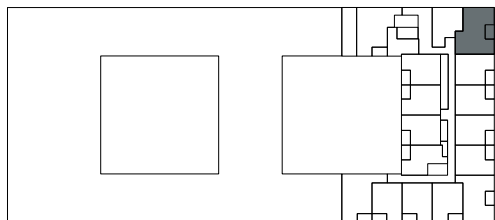
102.2 m²

Appartement Nr.

4.15

Appartement Nr.

5.16



0 2m

TERTIANUM

Wohn- und Pflegezentrum Letzipark, Zürich

3½-Zimmer-Appartement

Typ 3.5 D

Wohnfläche

78.6 m²

Terrassen

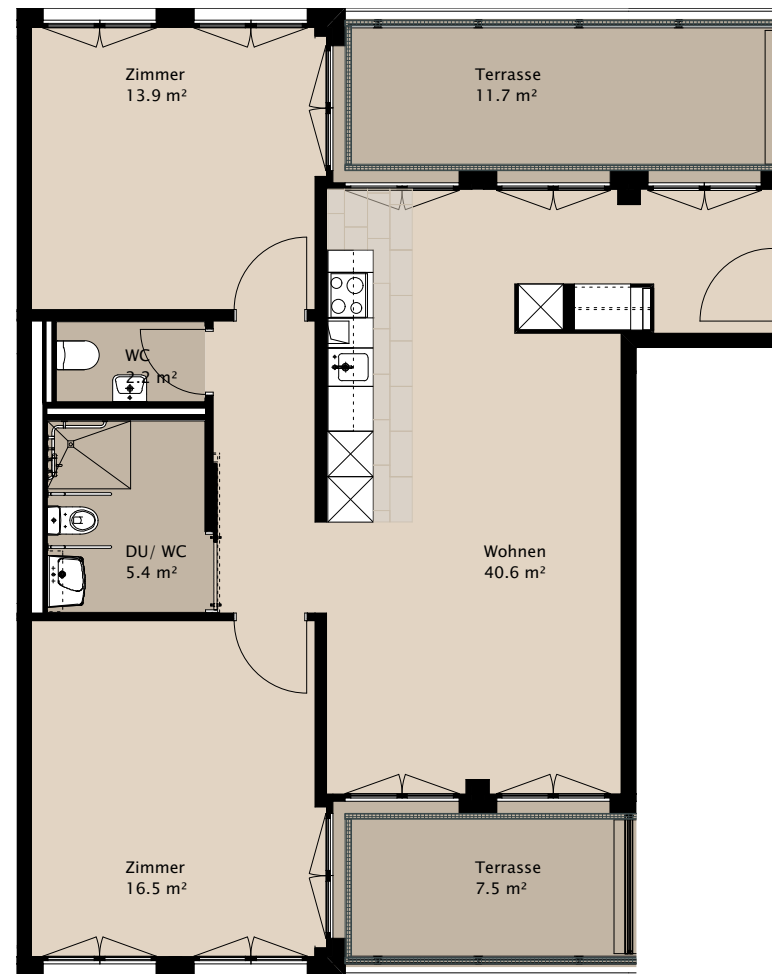
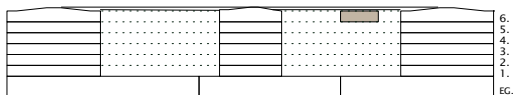
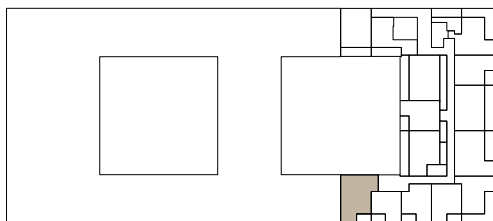
7.5/11.7 m²

Gesamtfläche

97.8 m²

Appartement Nr.

6.6



0 2m

TERTIANUM

Wohn- und Pflegezentrum Letzipark, Zürich

2½-Zimmer-Appartement

Typ 2.5 P

Wohnfläche

67.6 m²

Terrasse

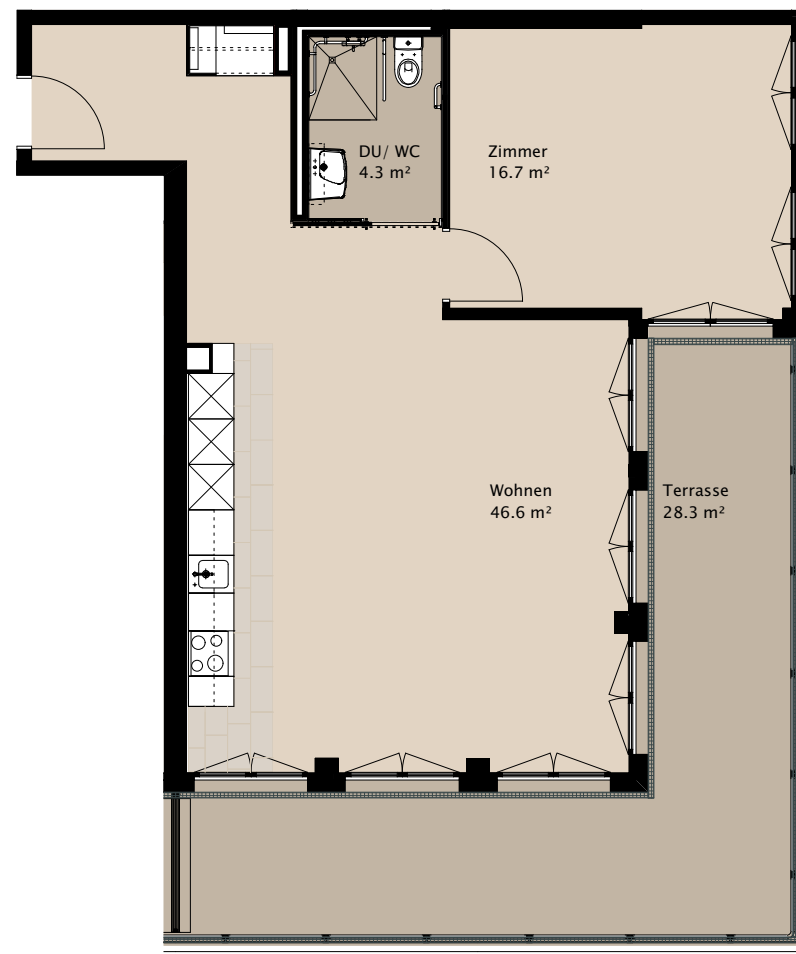
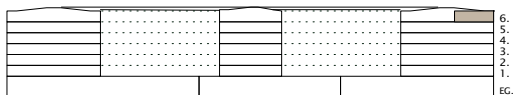
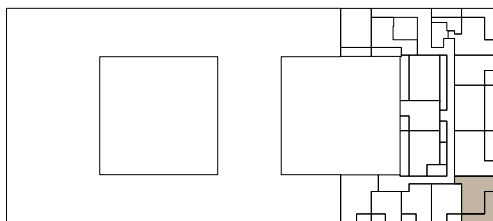
28.3 m²

Gesamtfläche

95.9 m²

Appartement Nr.

6.10



0 2m

TERTIANUM

Wohn- und Pflegezentrum Letzipark, Zürich

3½-Zimmer-Appartement

Typ 3.5 F

Wohnfläche

98.0 m²

Terrasse

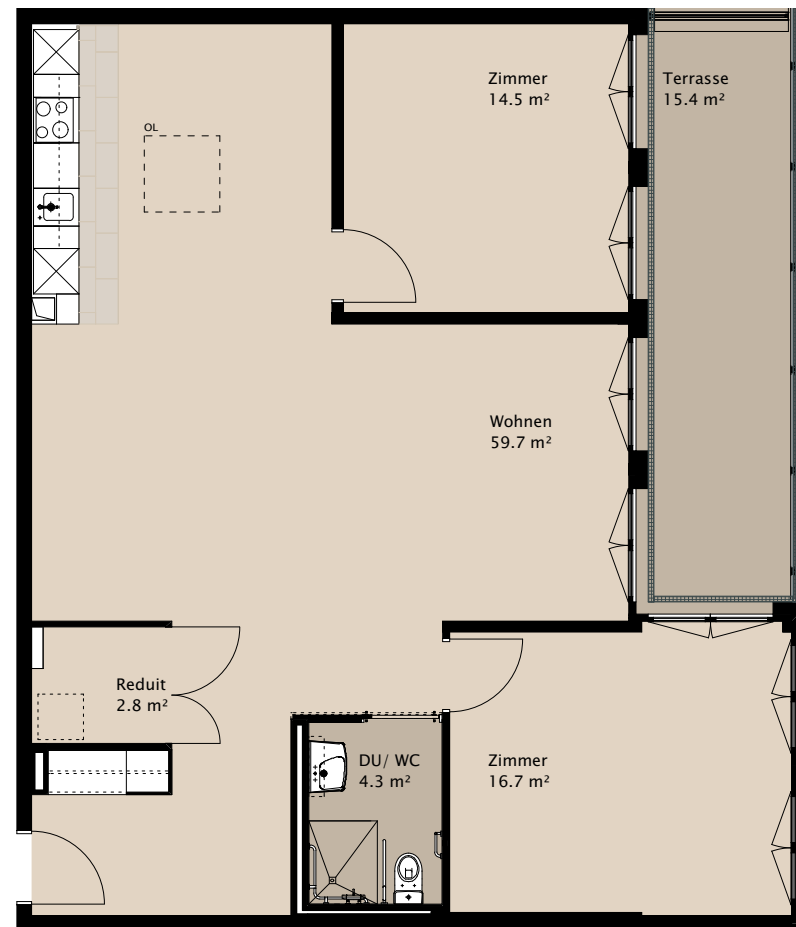
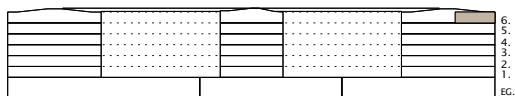
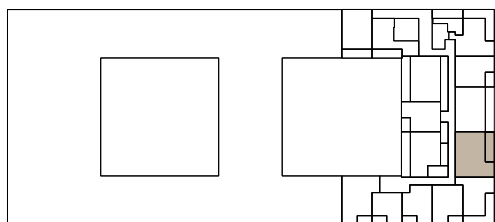
15.4 m²

Gesamtfläche

113.4 m²

Appartement Nr.

6.11



TERTIANUM

Wohn- und Pflegezentrum Letzipark, Zürich

3½-Zimmer-Appartement

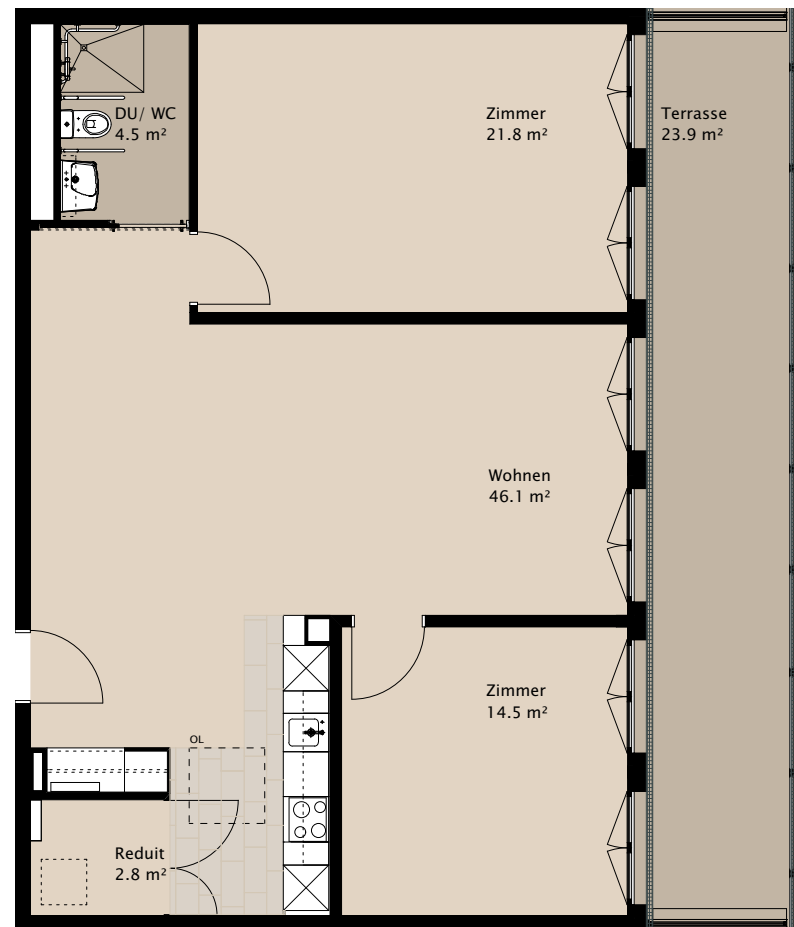
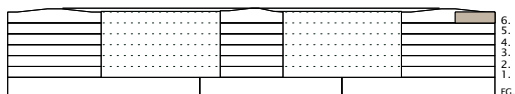
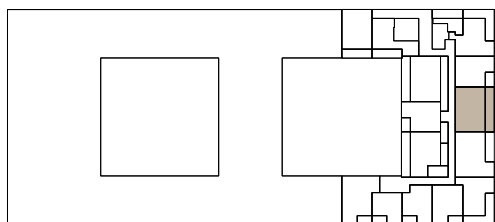
Typ 3.5 G

Wohnfläche 89.7 m²

Terrasse 23.9 m²

Gesamtfläche 113.6 m²

Appartement Nr. 6.12



TERTIANUM

Wohn- und Pflegezentrum Letzipark, Zürich

3½-Zimmer-Appartement

Typ 3.5 H

Wohnfläche 97.3 m²

Terrasse 14.6 m²

Gesamtfläche 111.9 m²

Appartement Nr. 6.3

